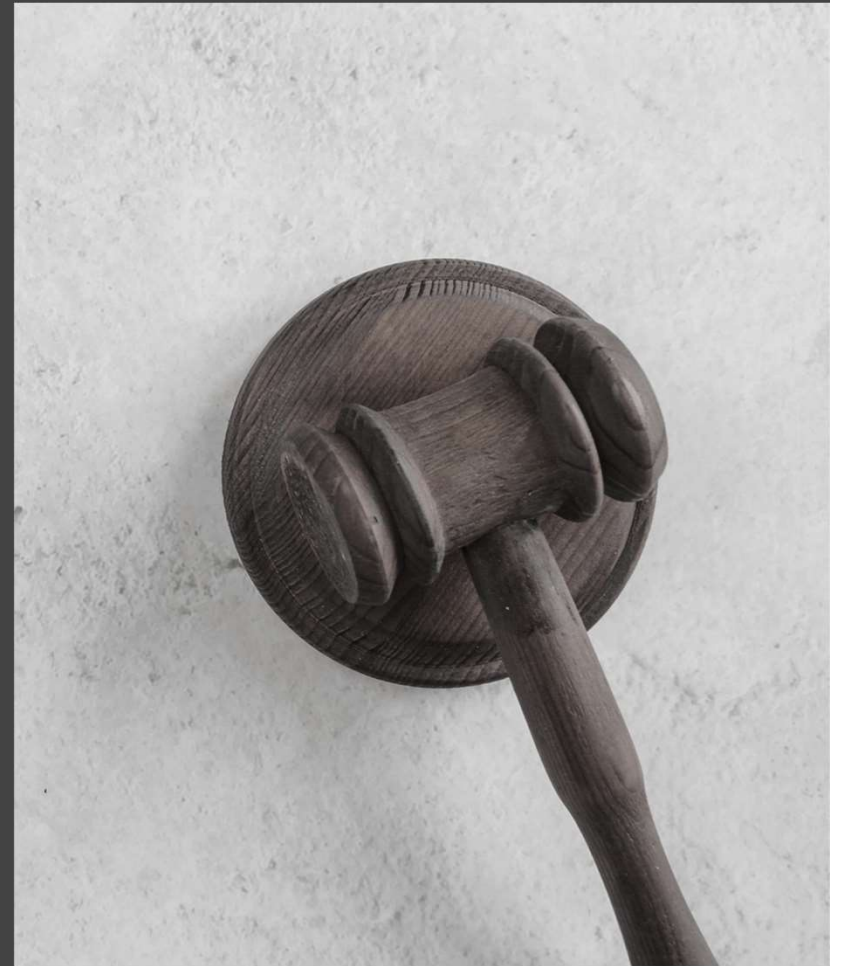


PROPOSED NEW COOK COUNTY JUDICIAL SUBCIRCUITS MAP

Mapping a court system for
the next generation

By Frank Calabrese





Public Act 101-0477, signed into law last year, requires the General Assembly to “redraw the boundaries of the (Cook County) subcircuits to reflect the results of the 2020 federal decennial census.”

This is the first time the Cook County judicial subcircuits will be redistricted since they were created.

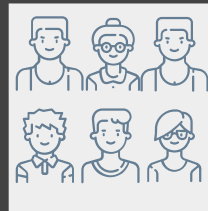
The 15 judicial subcircuit districts of Cook County were created by law in 1991, and the population patterns of Cook County have changed significantly since 1991.

PROBLEMS WITH CURRENT SUBCIRCUIT MAP



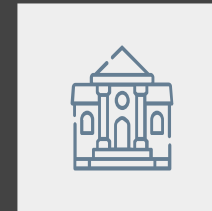
POPULATION

The population of the current subcircuits are greatly unbalanced



DIVERSITY

Only 5 of 15 subcircuits are majority minority



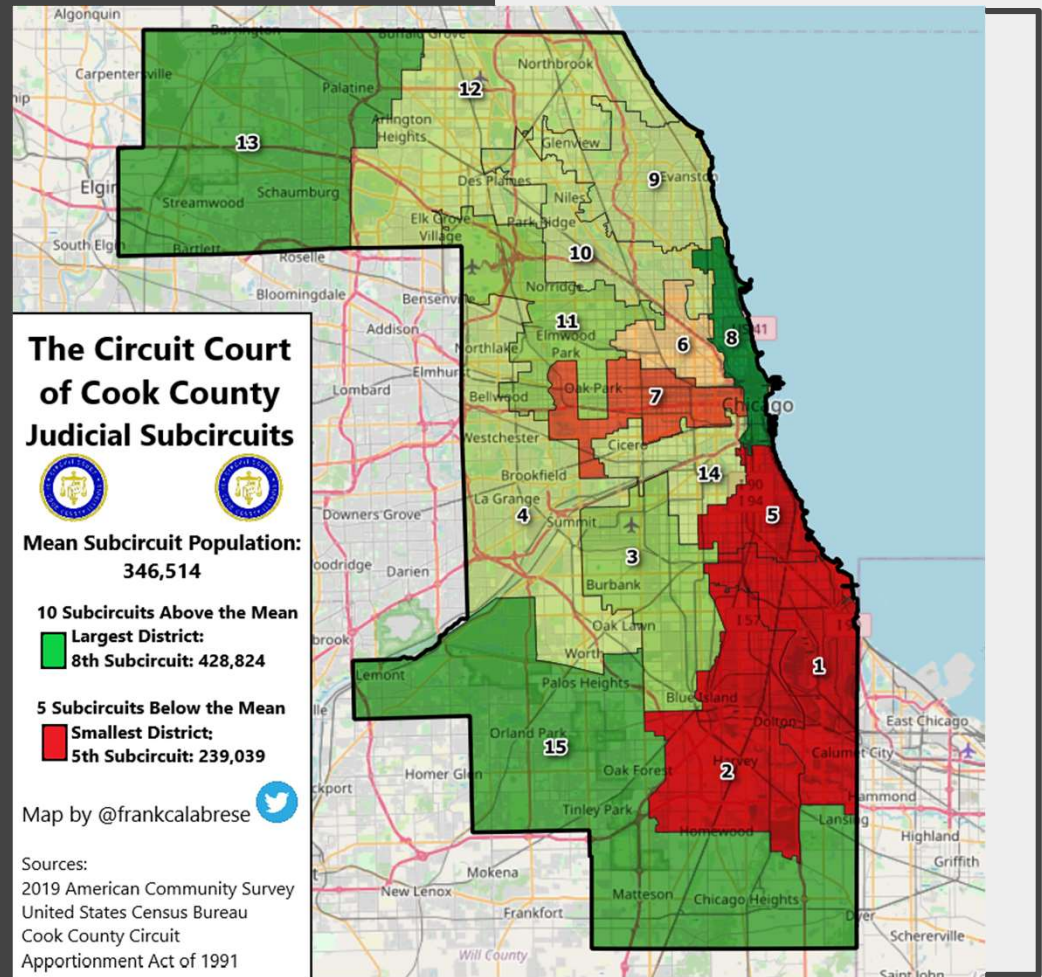
COMMUNITY

The subcircuits do not reflect cohesive communities

POPULATION PROBLEM

Public Act 101-0477 requires that “the subcircuits shall be compact, contiguous, and substantially equal in population.”

Currently, the subcircuits do not substantially have equal population. The current population range is 428,824 to 239,039, a difference of 189,87 people.

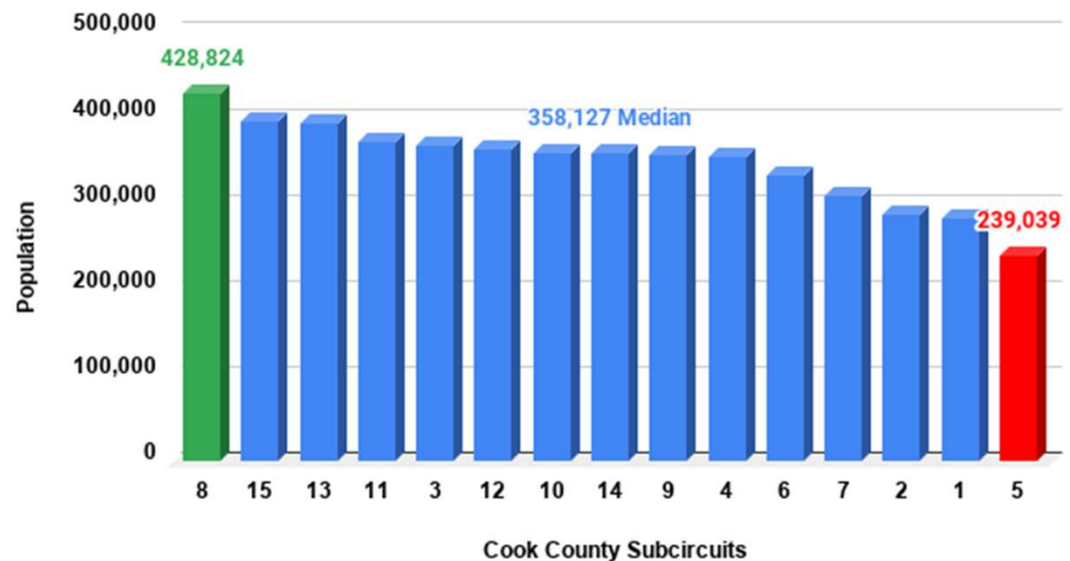


POPULATION PROBLEM

The 8th Subcircuit has the most people with 428,824 and the 5th Subcircuit has the least with 239,039 people. The population mean of the 15 subcircuits is 346,514 and the median subcircuit is the 14th Subcircuit with 358,127 people.

The 5th Subcircuit is over 44% smaller than the 8th Subcircuit, much higher than the 10% population deviation tolerated by federal courts. *Karcher v. Daggett*, 462 U.S. 725, 730-31 (1983); *White v. Regester*, 412 U.S. 755 (1973).

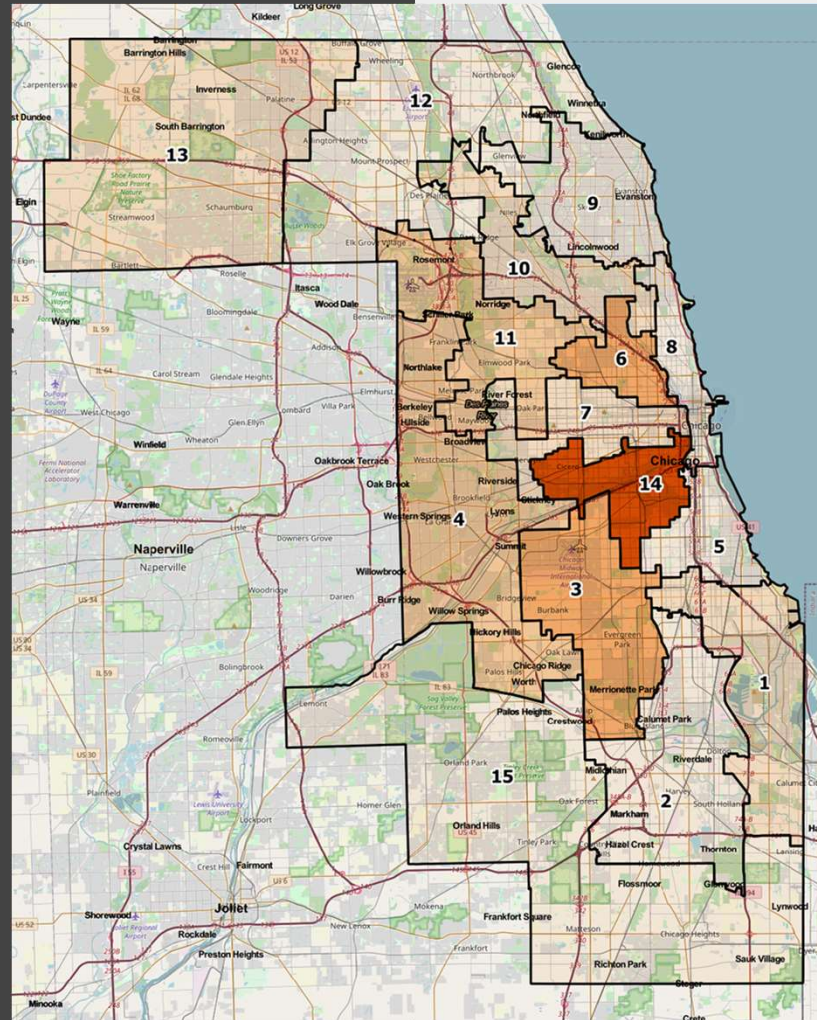
Cook County Judicial Subcircuits 2019 Population



DIVERSITY PROBLEM

The current subcircuits only have one majority Latino subcircuit, even though the overall population of Cook County is over a quarter Latino.

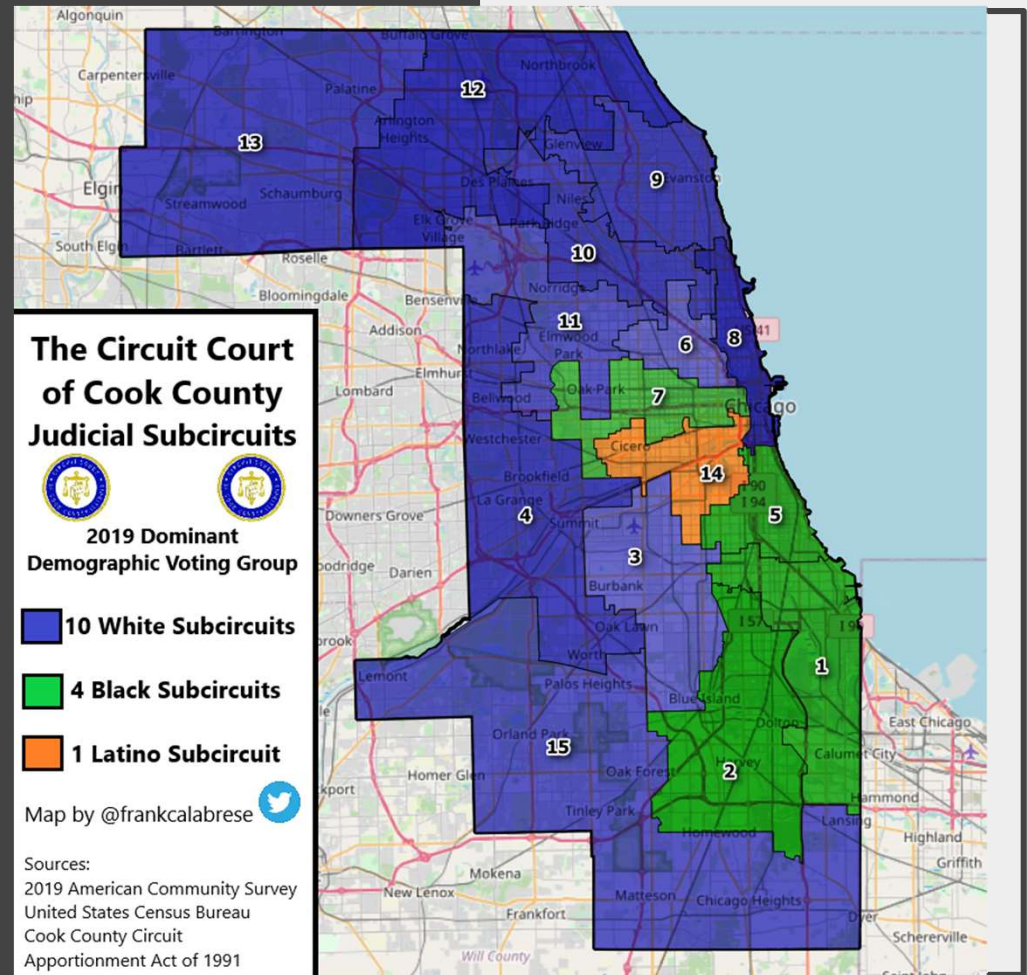
The 6th Subcircuit was drawn to be a Latino district, but it is now a majority white district by voting population. The current voting population of the 6th Subcircuit is 37% Latino and 50% white.



DIVERSITY PROBLEM

Of the 15 subcircuits, 10 subcircuits have whites as the largest voting blocks, with nine subcircuits being majority white and the 3rd Subcircuit being plurality white. There are four majority Black subcircuits.

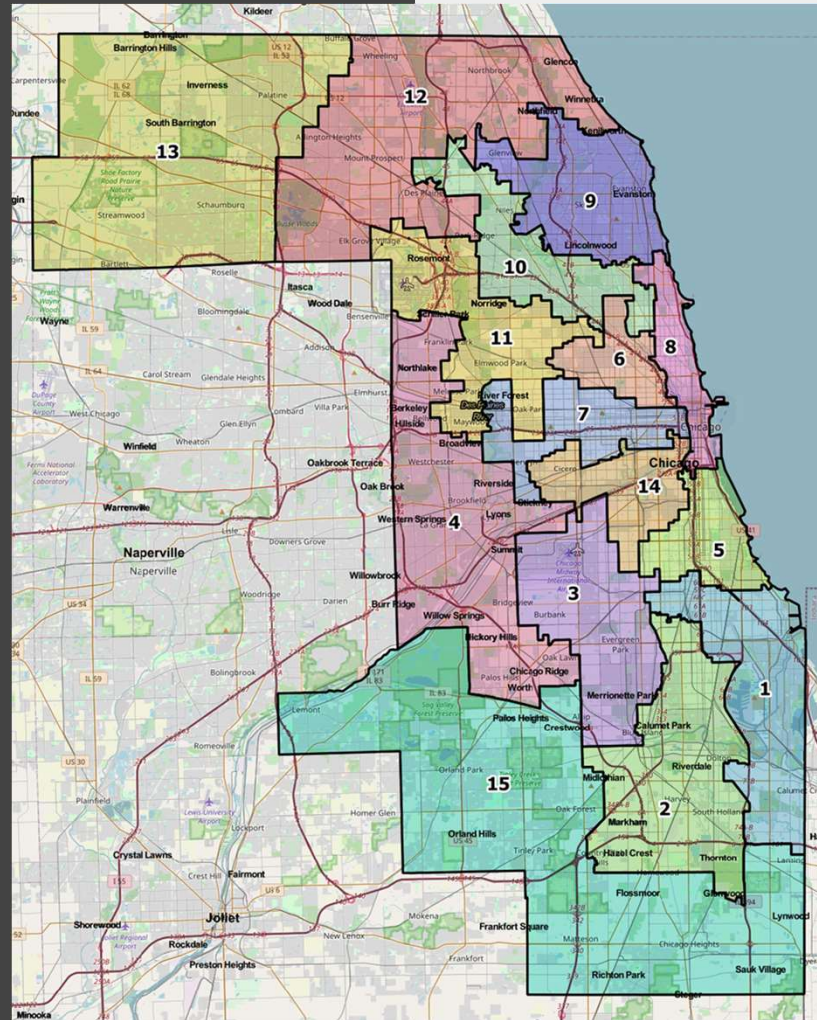
The 7th Subcircuit has seen its Black voting population diluted, but it is still a 57% Black district by voting population. There is only one majority Latino subcircuit, the 14th Subcircuit, which is 62% Latino.



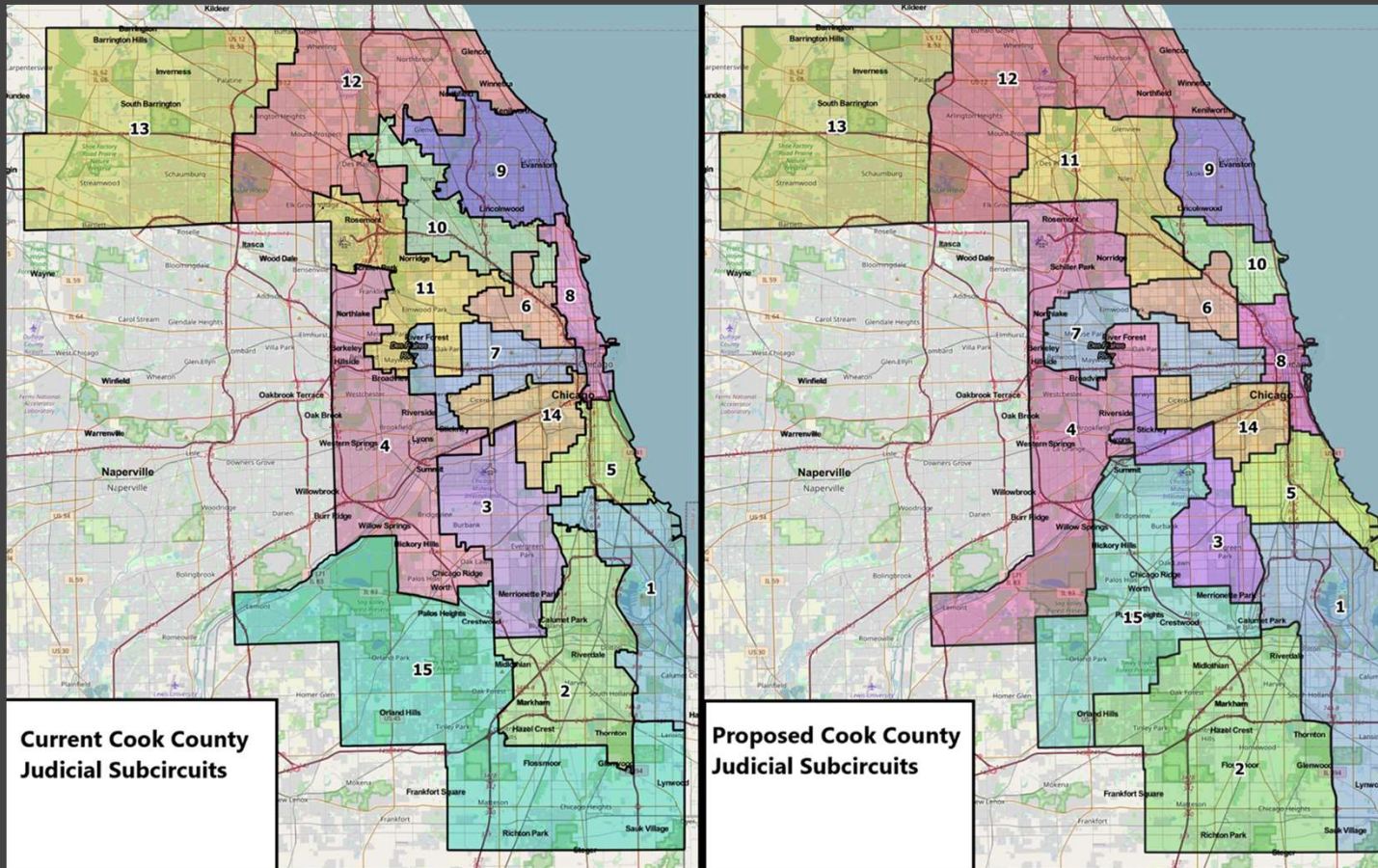
COMMUNITY PROBLEM

The current judicial subcircuits of Cook County have jagged edges and make little sense in terms of keeping communities together. Wealthy suburbs and neighborhoods are in the same districts as poor suburbs and neighborhoods.

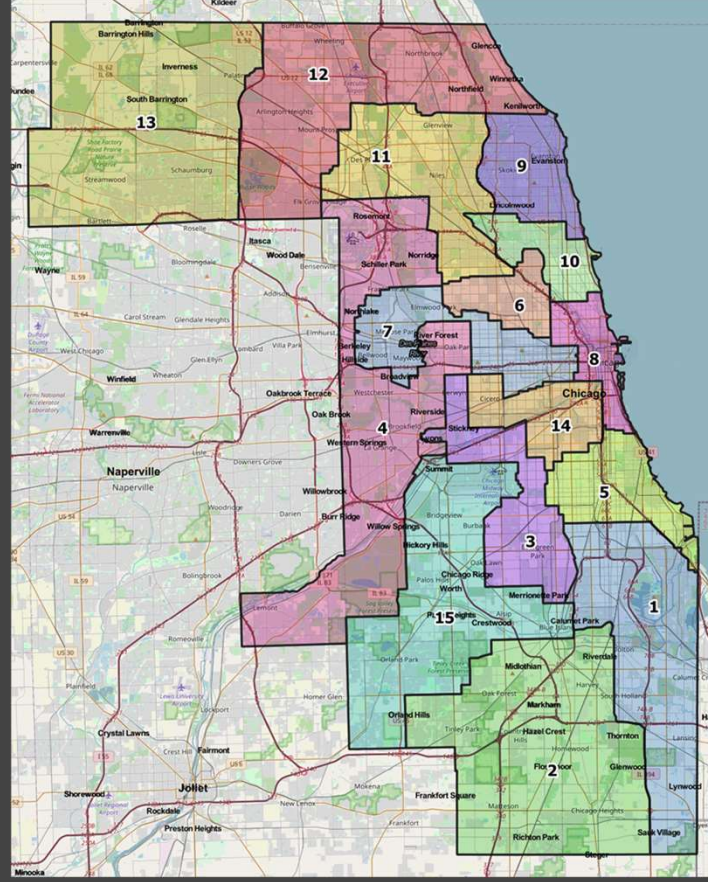
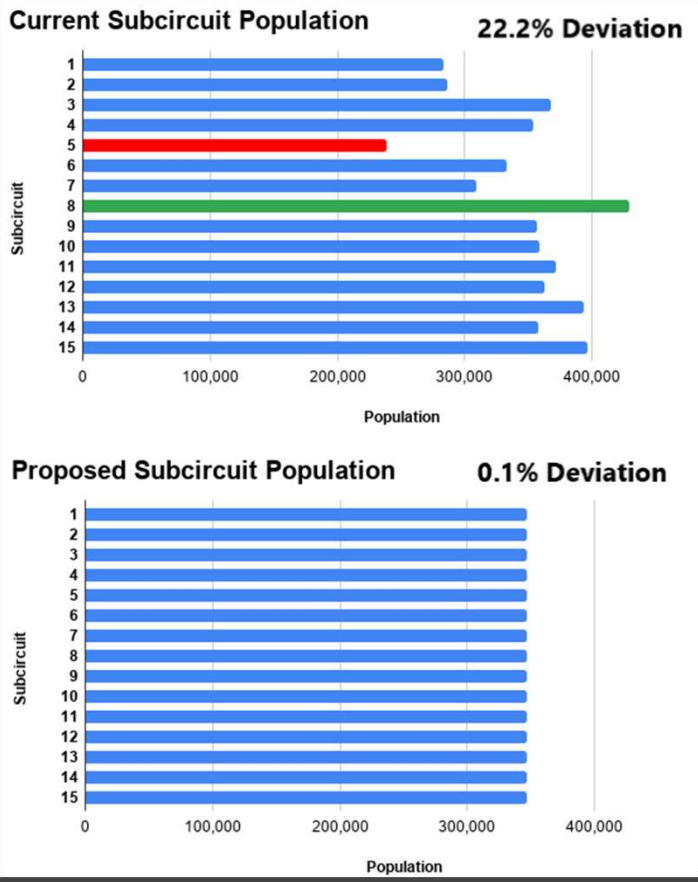
For example, why is Berwyn, a Latino working class suburb, in the same subcircuit as River Forest, a wealthy white suburb, and the west side of Chicago, a largely poor African American area.



THE PROPOSED NEW COOK COUNTY JUDICIAL SUBCIRCUIT SOLVES ALL THREE PROBLEMS



POPULATION PROBLEM SOLVED

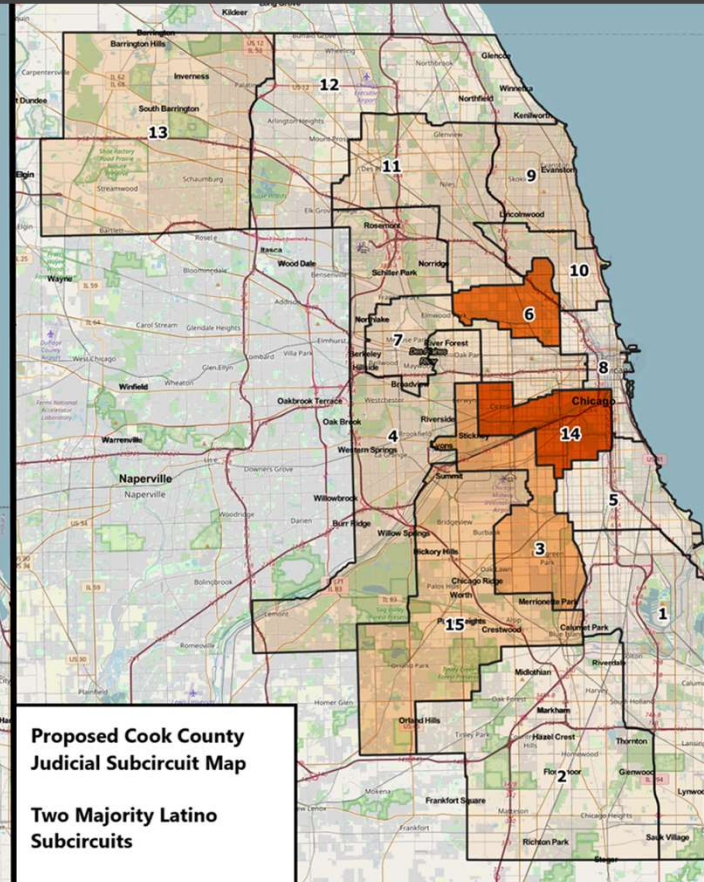
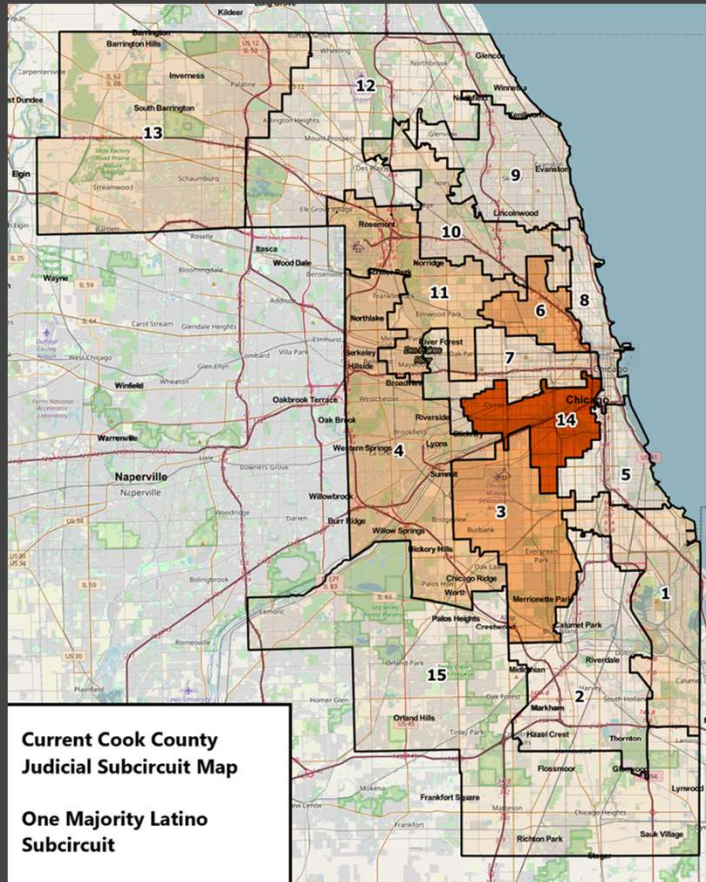


The proposed new Cook County Judicial Subcircuits have equal population, according to the 2019 American Community Survey

Each of the 15 subcircuits will have about 346,500 residents, with a 0.1% deviation

This is a significant improve upon the current 22.2% population deviation

DIVERSITY PROBLEM SOLVED

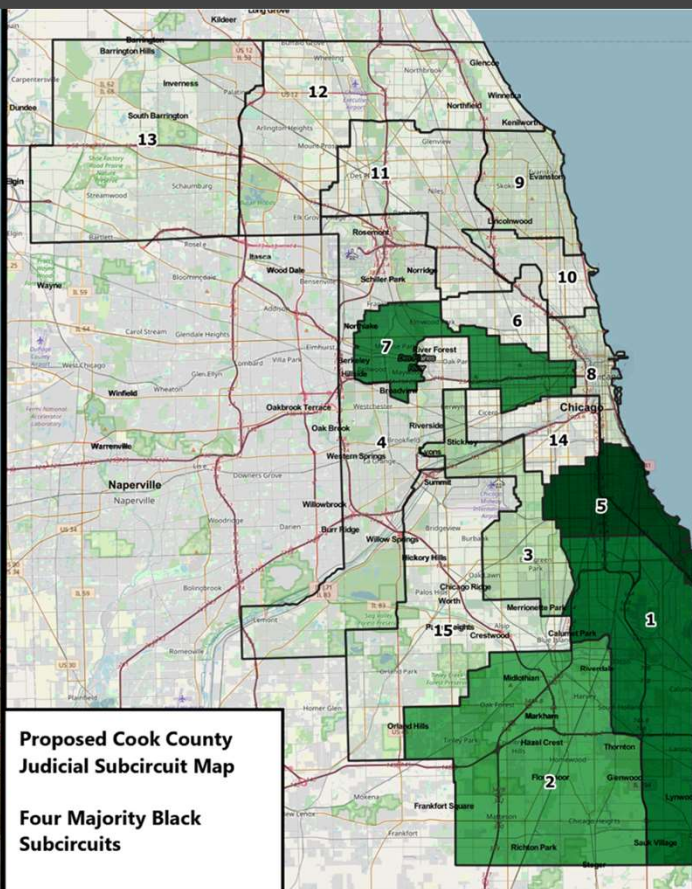
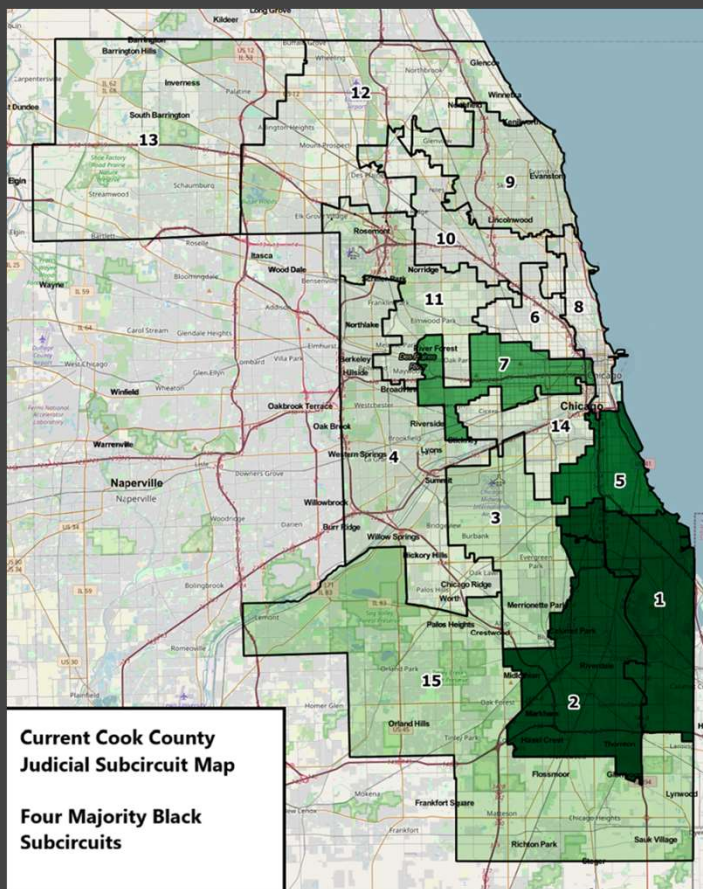


The proposed new Cook County subcircuits creates an addition Latino subcircuit

Currently, only the 14th subcircuit on the southwest side of Chicago is majority Latino.

In the proposed new map, the 6th subcircuit on the northwest side will also be majority Latino

DIVERSITY PROBLEM SOLVED

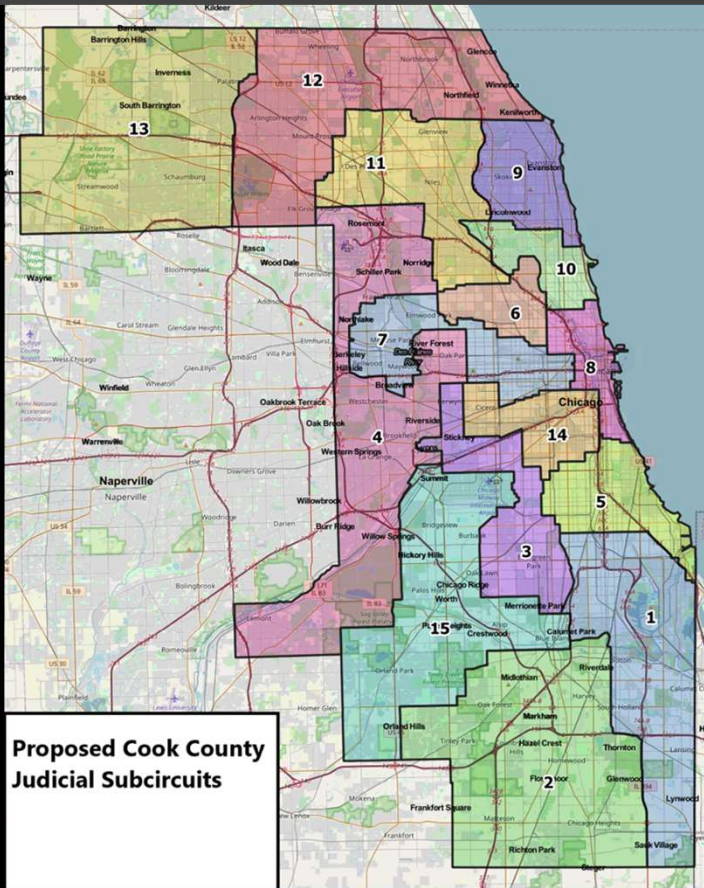
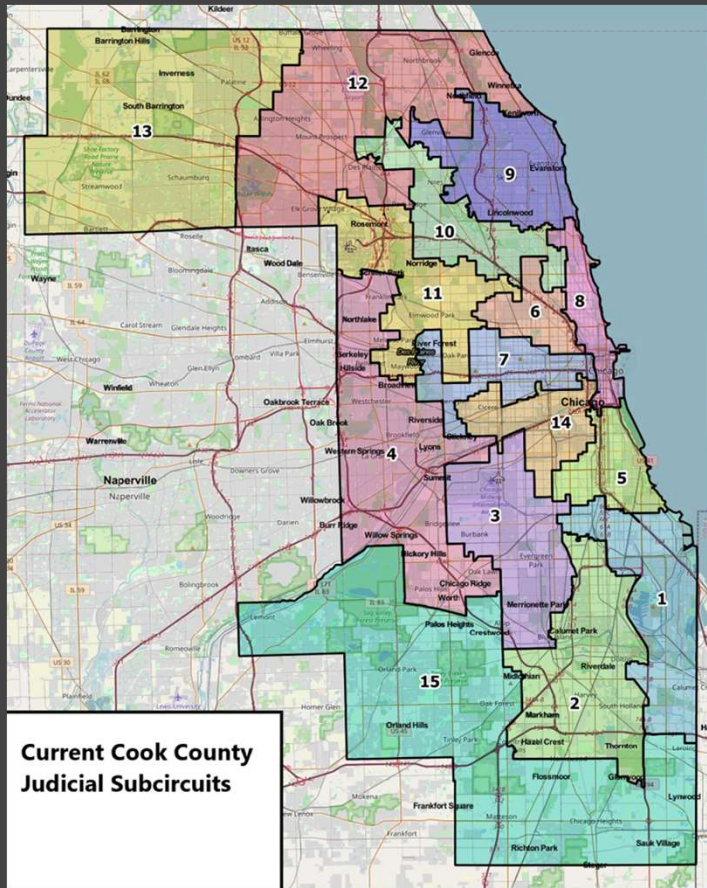


The proposed new Cook County subcircuits keeps four majority Black subcircuits.

In the new proposed map, Black suburbs in the western suburbs, such as Maywood, are incorporated into the 7th subcircuit.

Further, Black suburbs in the south suburbs, such as Matteson, as incorporated into the 2nd subcircuit

COMMUNITY PROBLEM SOLVED

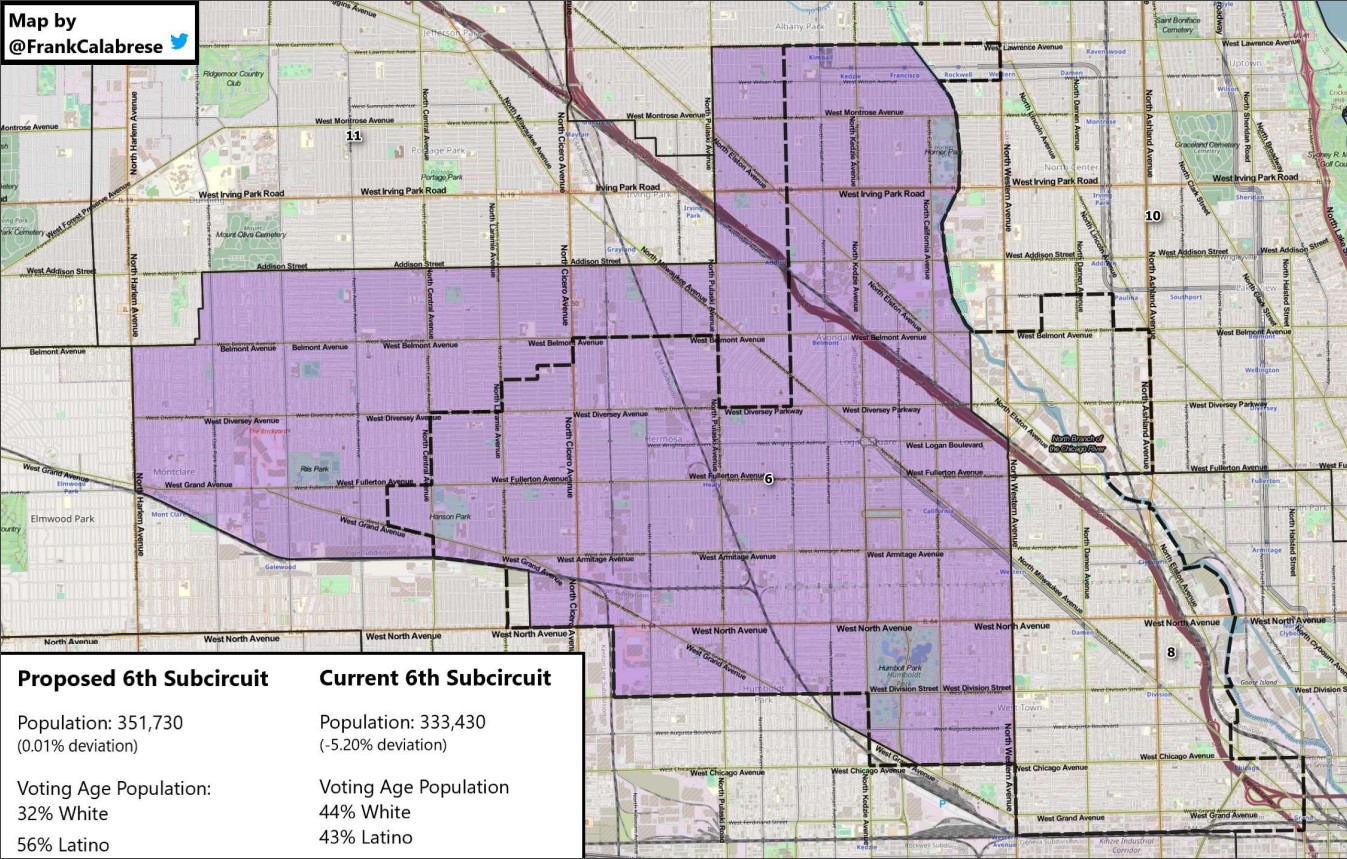


The proposed new Cook County subcircuits have easily understood boundaries so that the public can understand the district boundaries. Also the districts keep communities whole and cohesive.

Similar communities, such as River Forest and Oak Park, are now in the same subcircuit

REMADE 6th SUBCIRCUIT

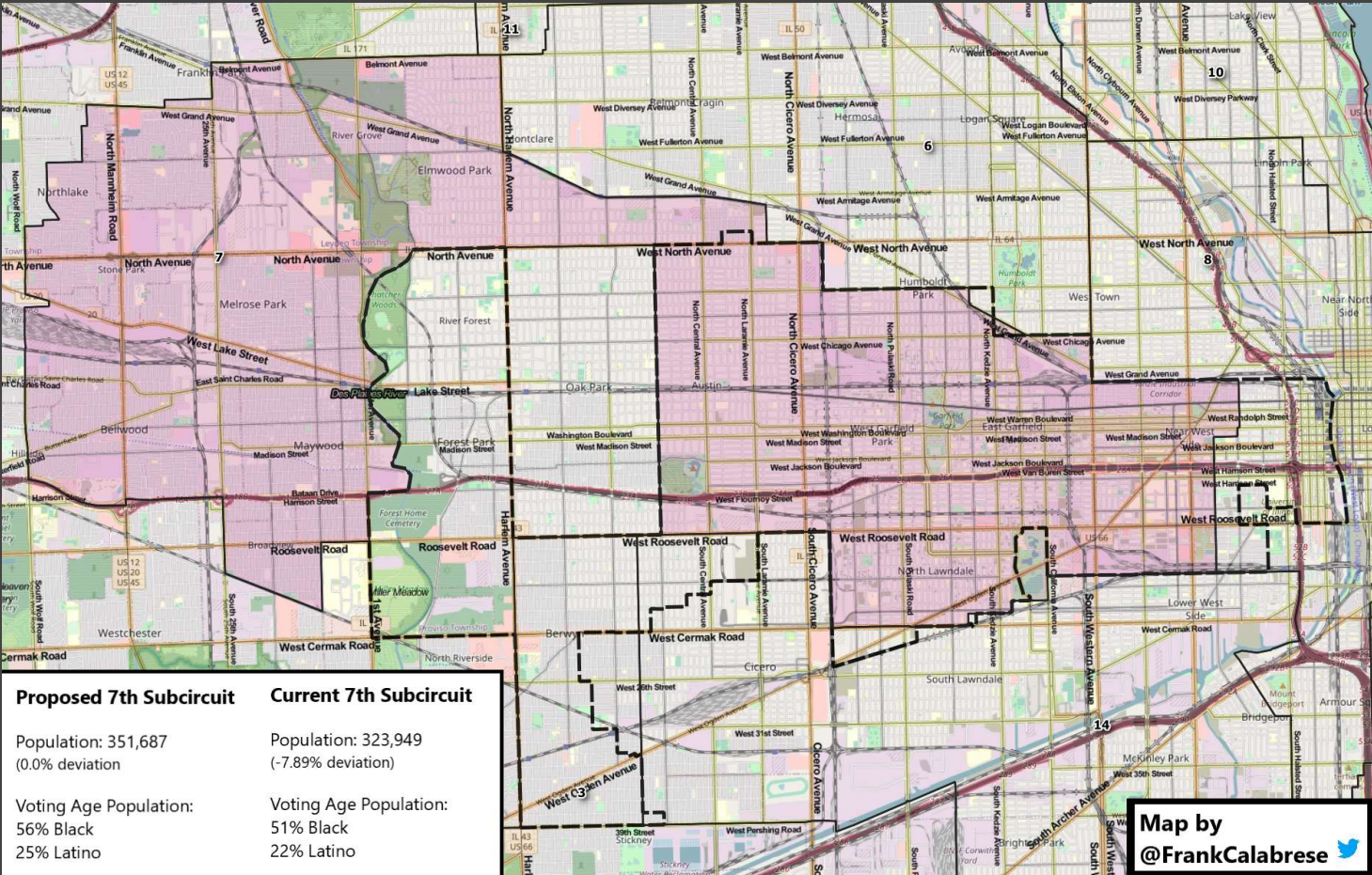
Map by
@FrankCalabrese



In the proposal, the 6th Subcircuit is 56% Latino, a significant increase from the current 43% Latino. The 6th Subcircuit changes from a white plurality district to a Latino majority district.

Proposed 6th Subcircuit	Current 6th Subcircuit
Population: 351,730 (0.01% deviation)	Population: 333,430 (-5.20% deviation)
Voting Age Population: 32% White 56% Latino	Voting Age Population 44% White 43% Latino

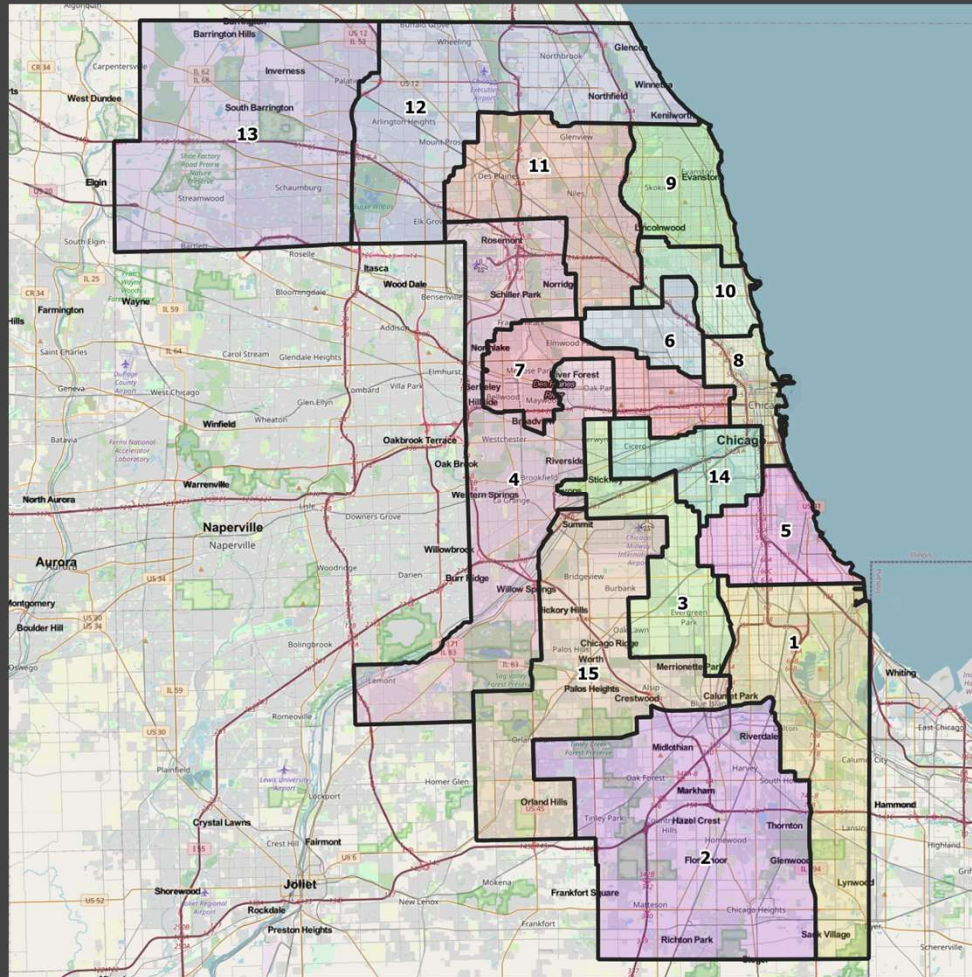
REMADE 7th SUBCIRCUIT



In the proposal, the 7th Subcircuit is 56% Black, an increase from the current 51% Black. The 7th Subcircuit now combines demographically similar communities, combining the west side of Chicago with Black western suburbs. Currently, the 7th subcircuit combines dissimilar communities such as River Forest, a wealthy suburb, and the west side of Chicago.

Map by
@FrankCalabrese

Cook County Subcircuits Data and Maps

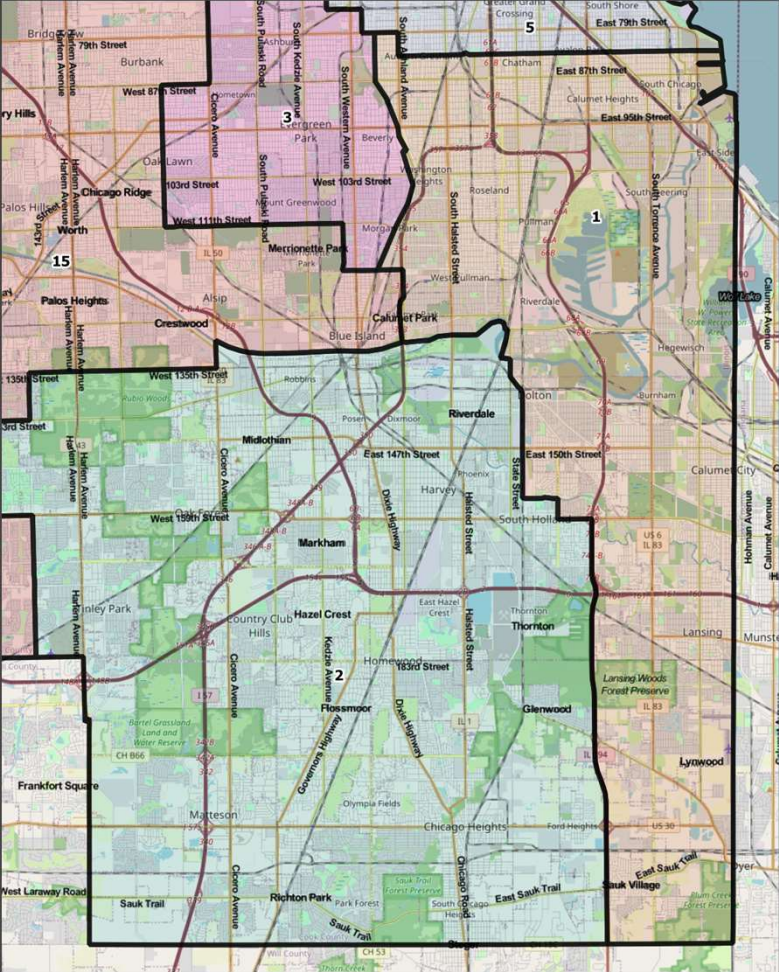


Demographic Data

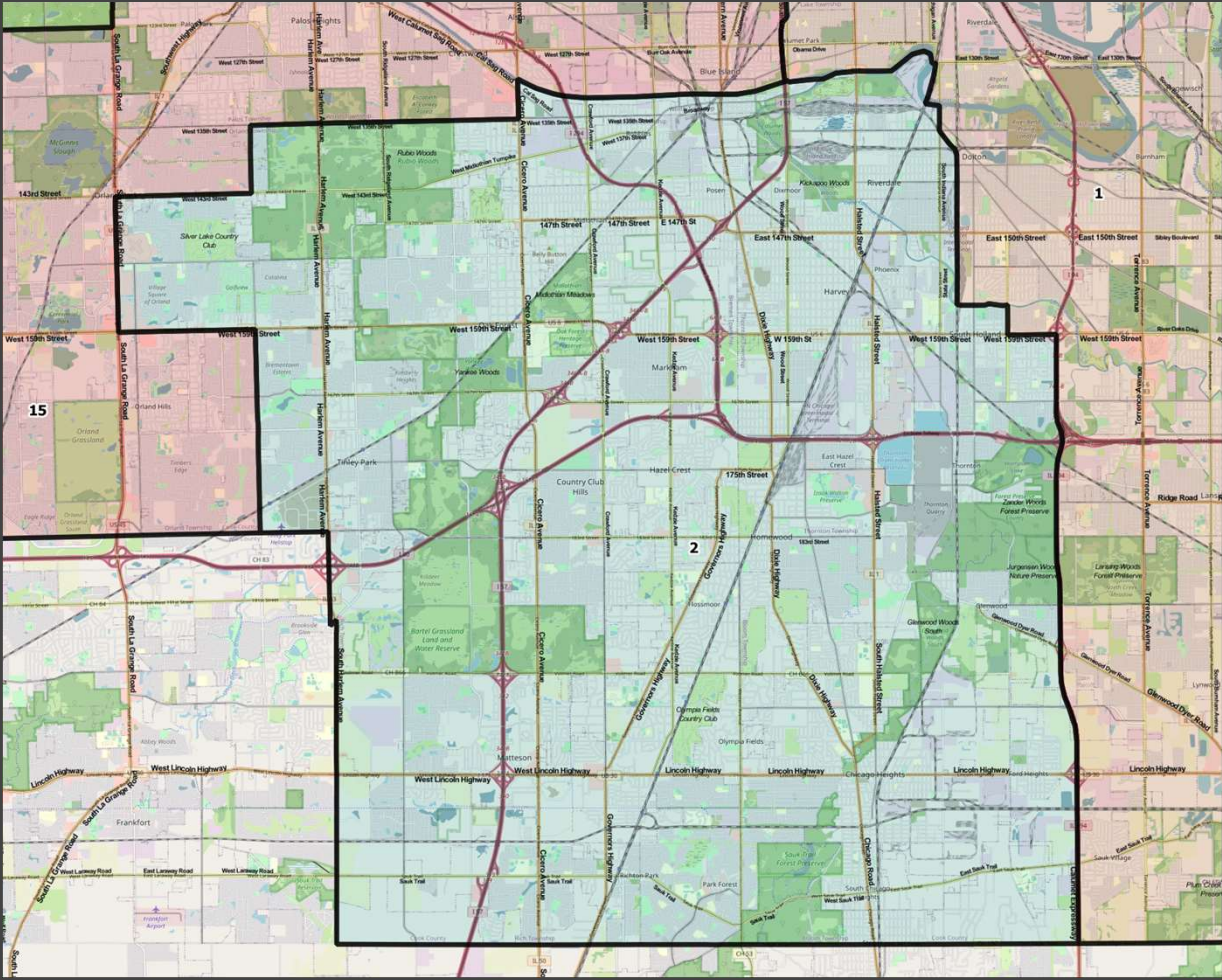
Cook County Subcircuit Proposal Demographics Submitted by Frank Calabrese

District	Population	White	Latino	Black	Asian	White %	Latino %	Black %	Asian %
1	350906	24123	56431	270255	1995	7%	16%	77%	1%
2	349005	107905	55566	177903	7522	31%	16%	51%	2%
3	350723	101320	182431	60114	7288	29%	52%	17%	2%
4	351774	230924	64449	33495	20885	66%	18%	10%	6%
5	351937	20883	29605	294086	9985	6%	8%	84%	3%
6	353232	100560	210711	27554	18324	28%	60%	8%	5%
7	352956	49776	98687	199556	8544	14%	28%	57%	2%
8	351941	218751	31218	44939	53460	62%	9%	13%	15%
9	352698	174054	51240	56555	68579	49%	15%	16%	19%
10	351706	218041	58172	27805	45140	62%	17%	8%	13%
11	351678	218347	63882	10075	57769	62%	18%	3%	16%
12	351660	242162	49507	8271	48534	69%	14%	2%	14%
13	352321	183931	76021	18210	72291	52%	22%	5%	21%
14	351756	34959	255226	25175	38309	10%	73%	7%	11%
15	351248	209507	99632	27988	12036	60%	28%	8%	3%

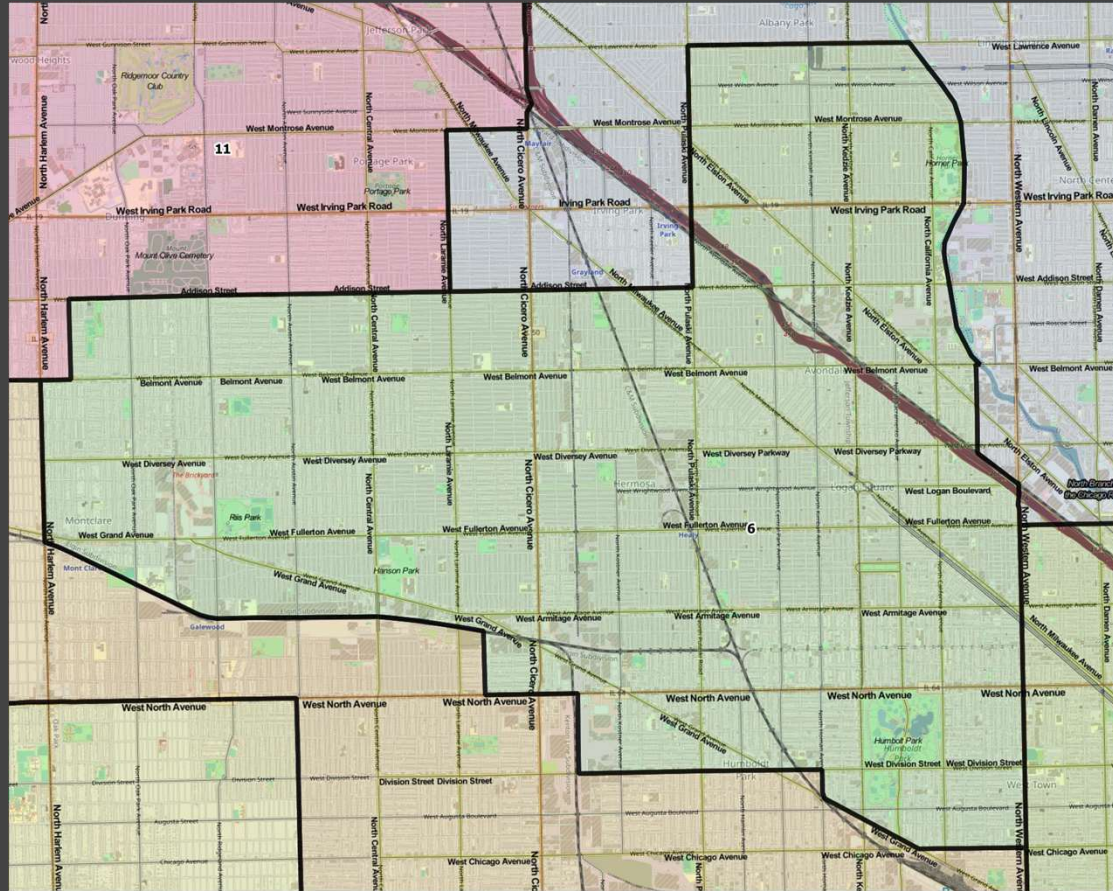
1st Subcircuit



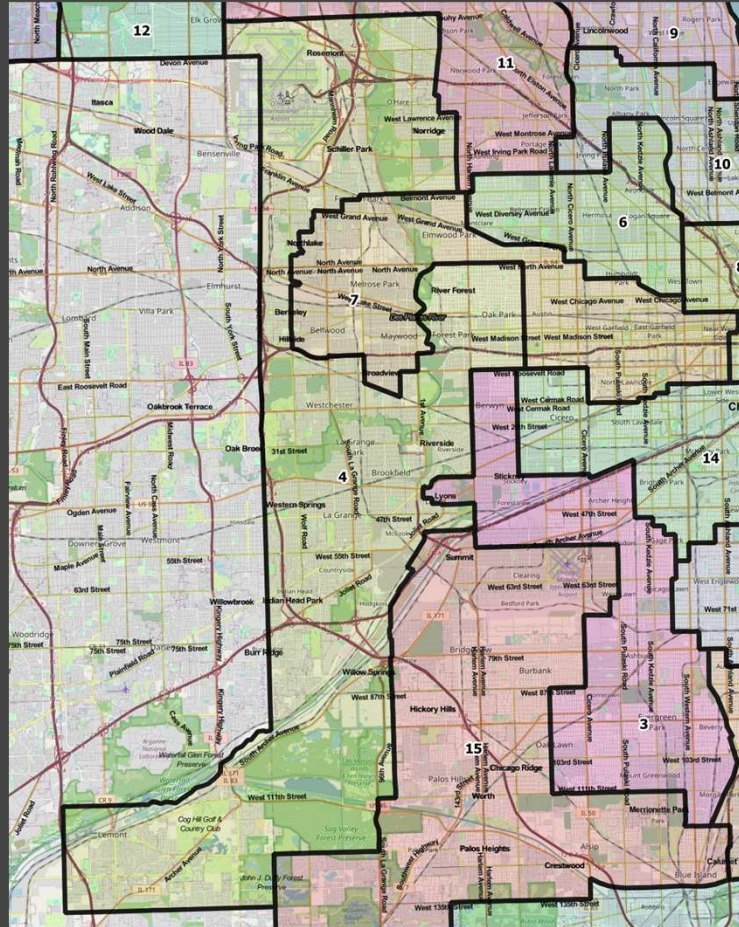
2nd Subcircuit



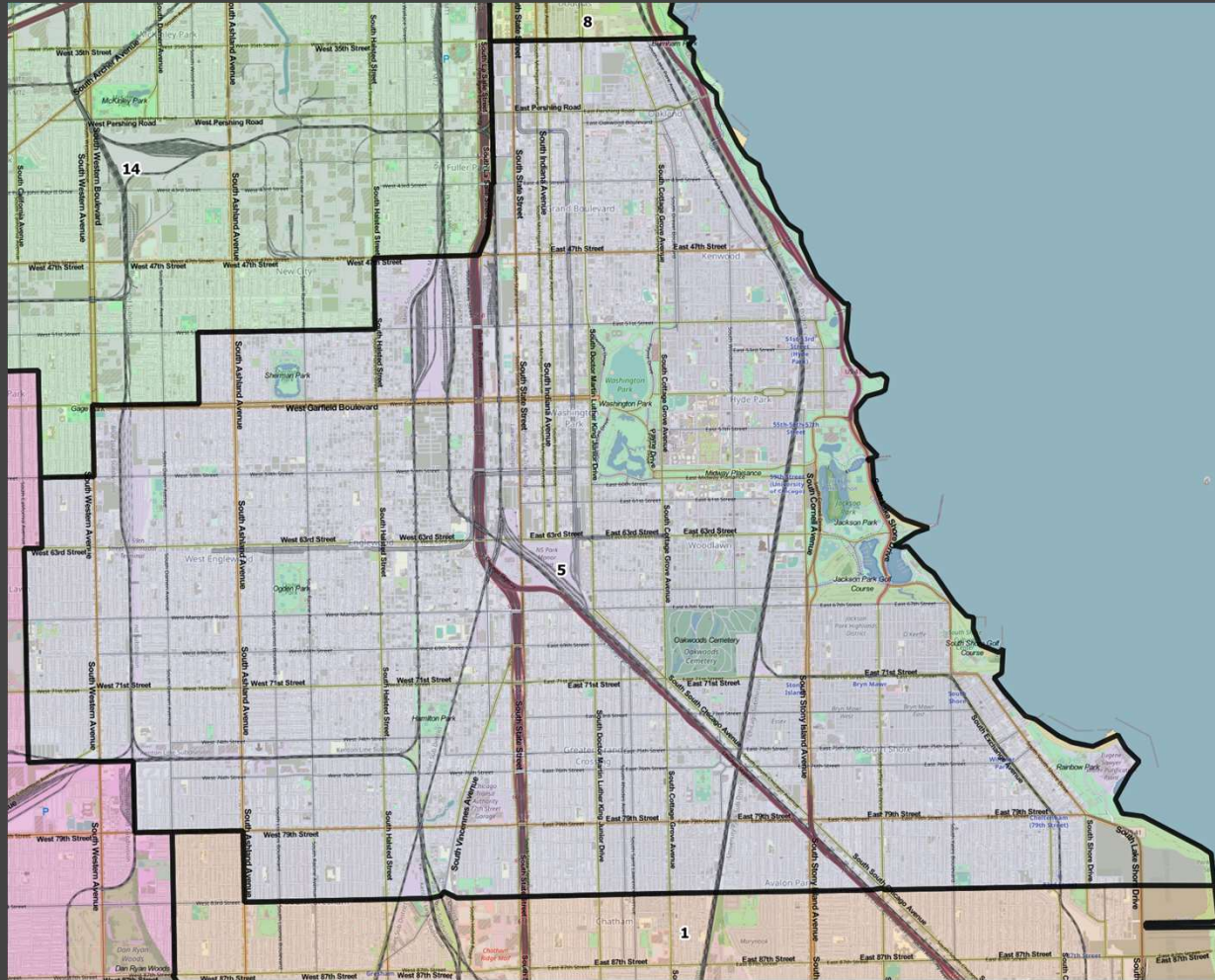
6th Subcircuit



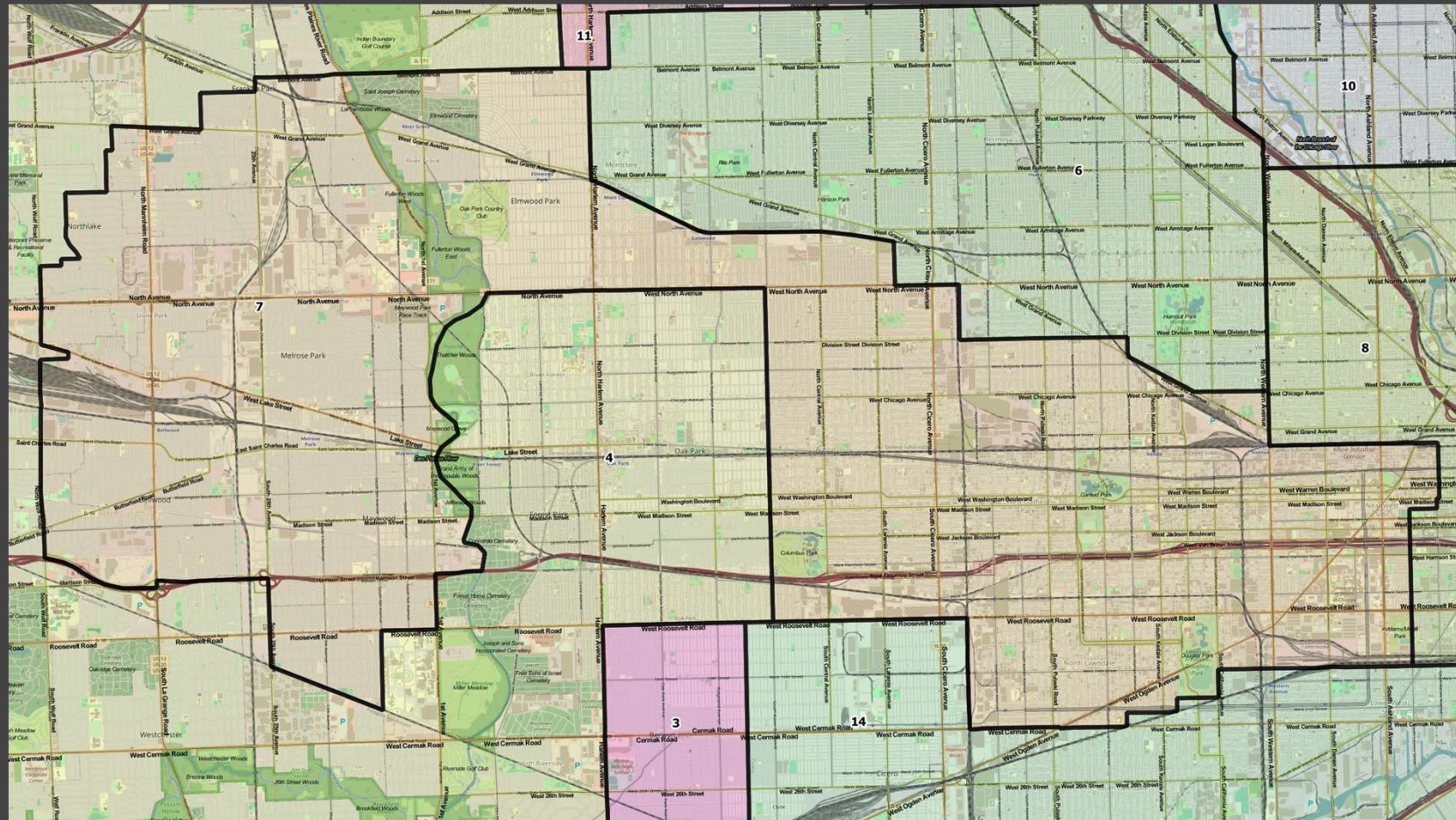
4th Subcircuit



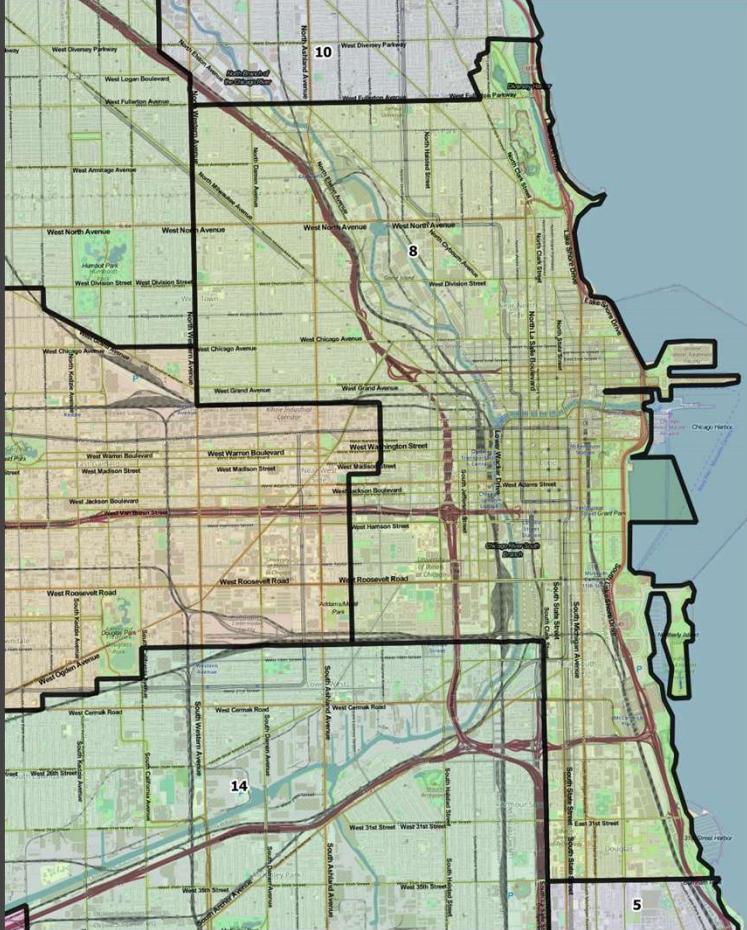
5th Subcircuit



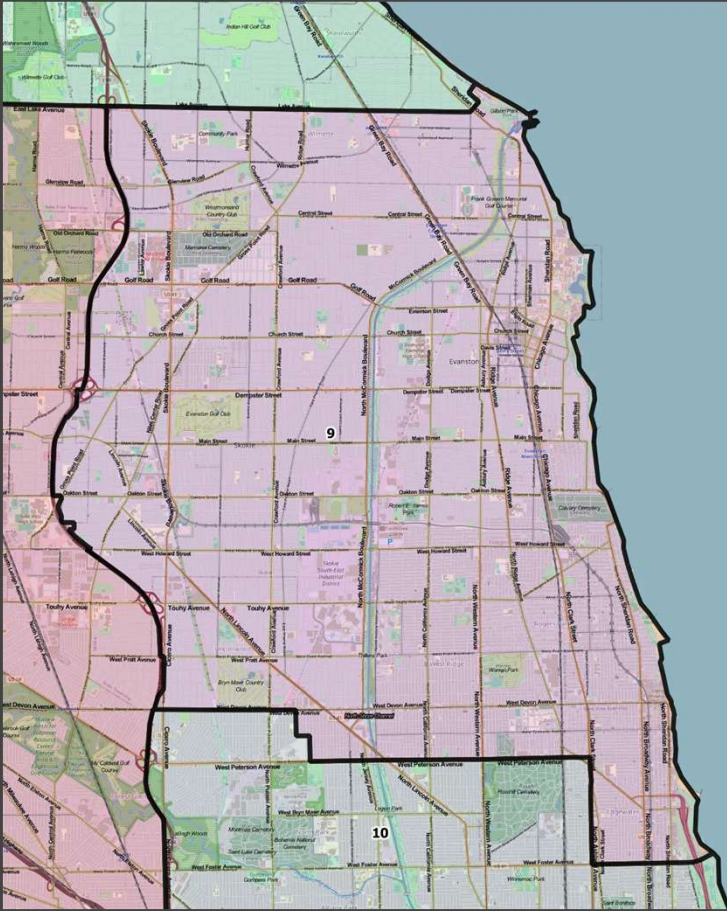
7th Subcircuit



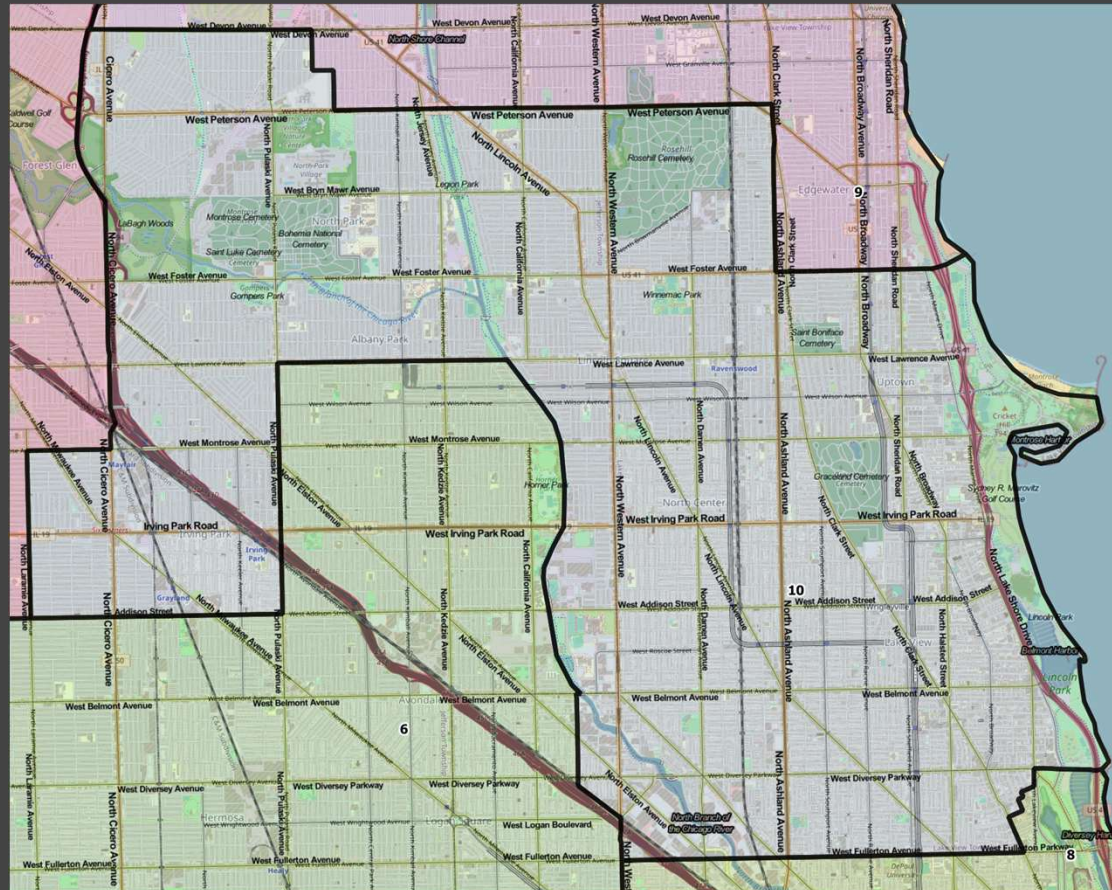
8th Subcircuit



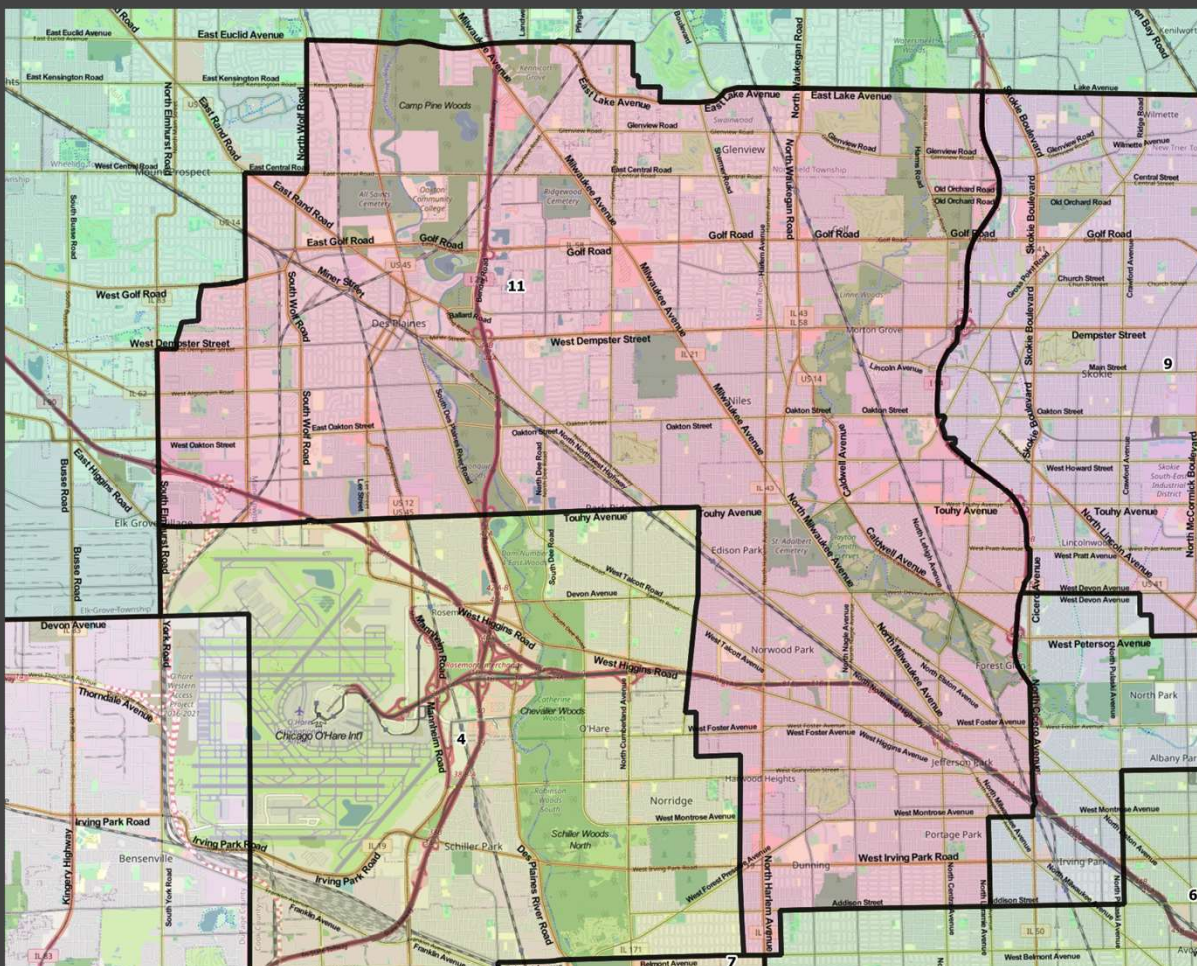
9th Subcircuit



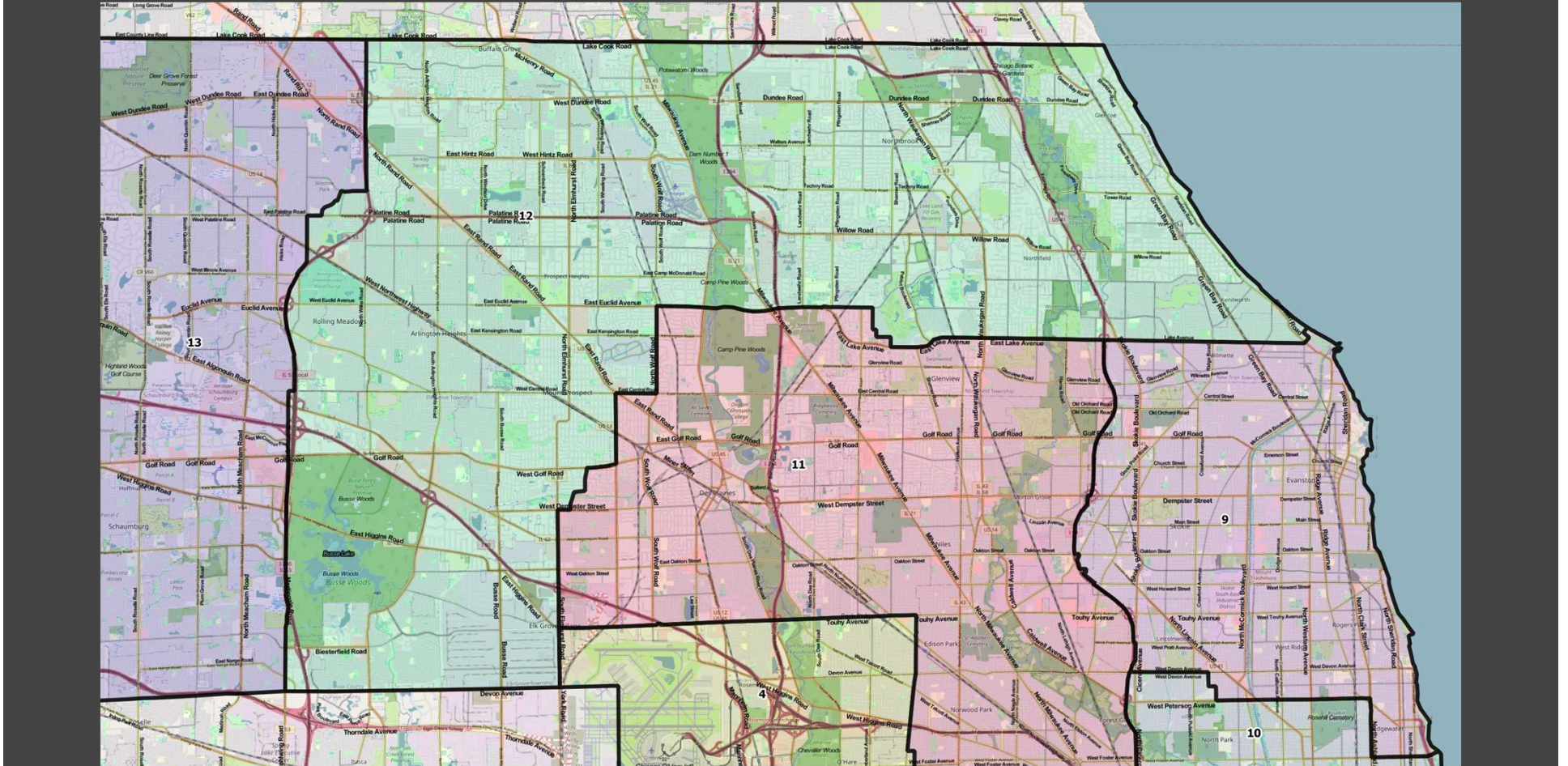
10th Subcircuit



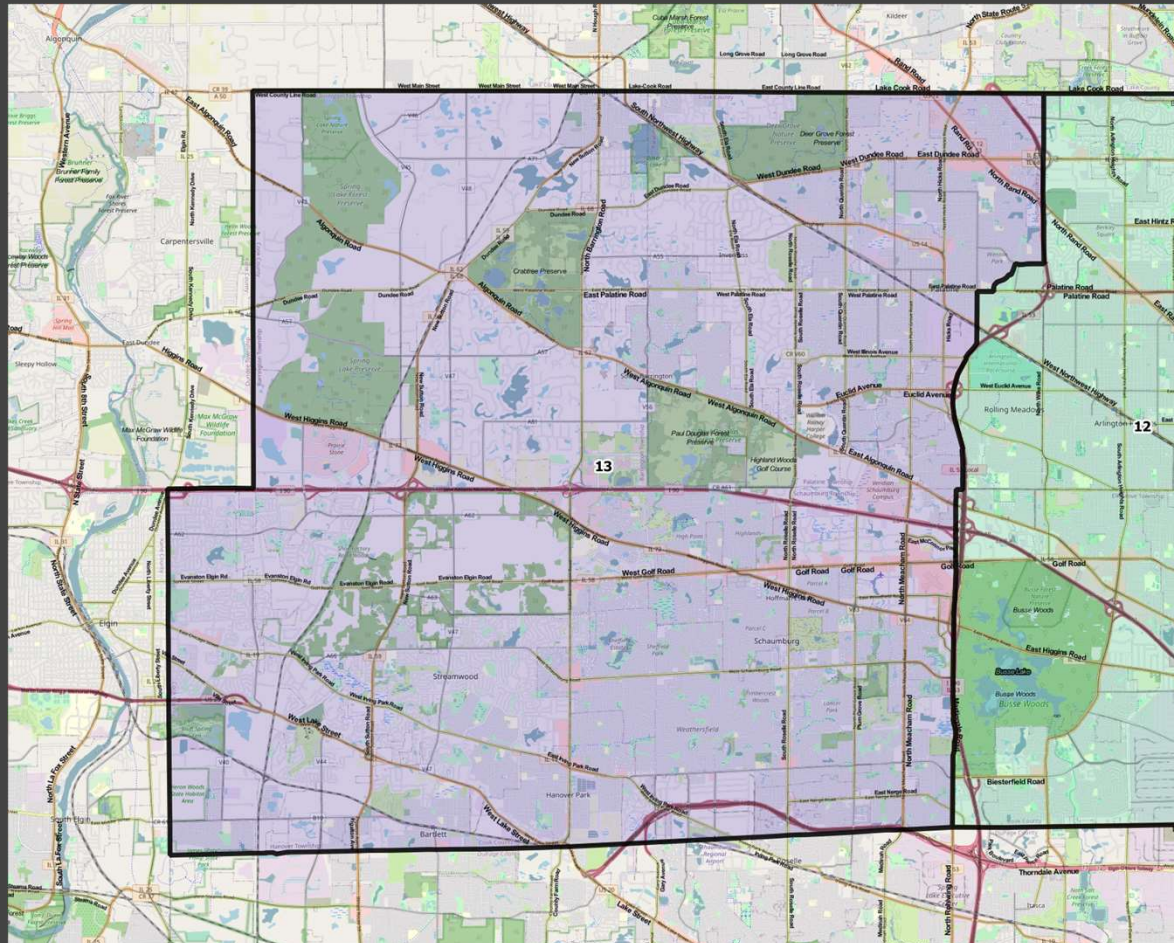
11th Subcircuit



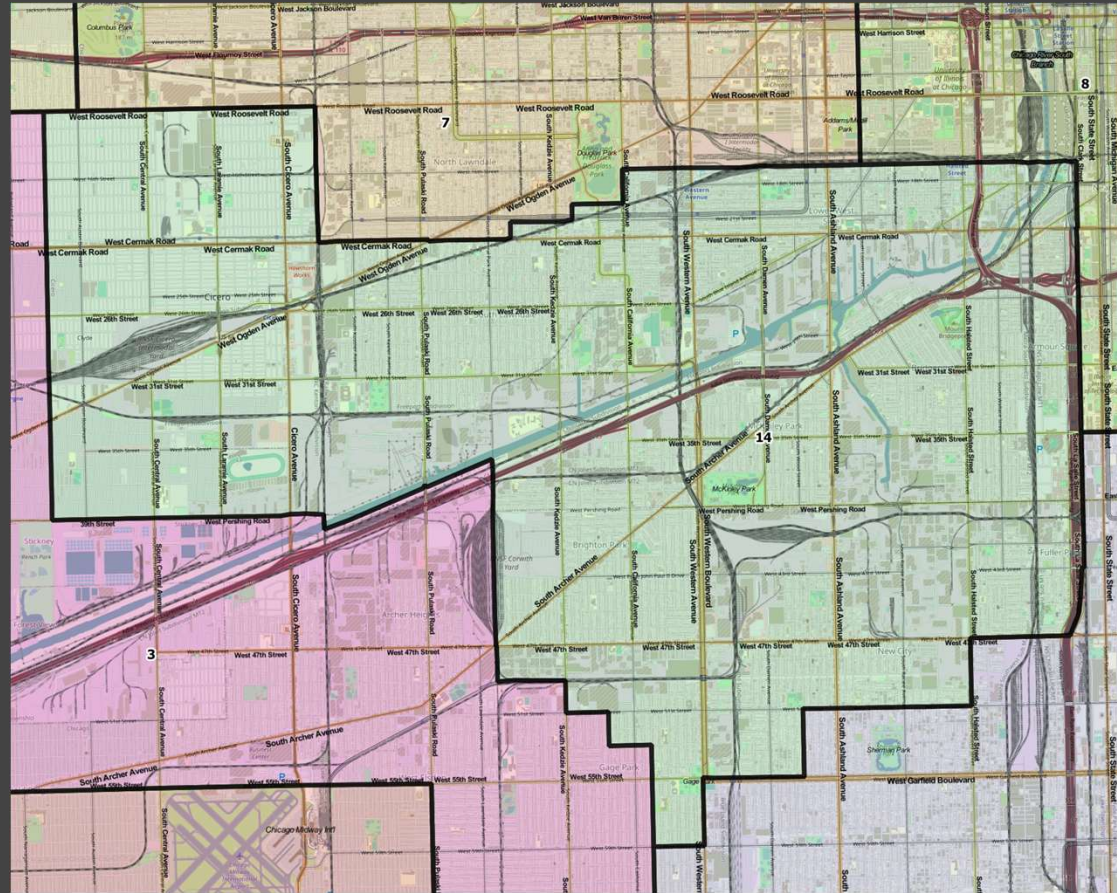
12th Subcircuit



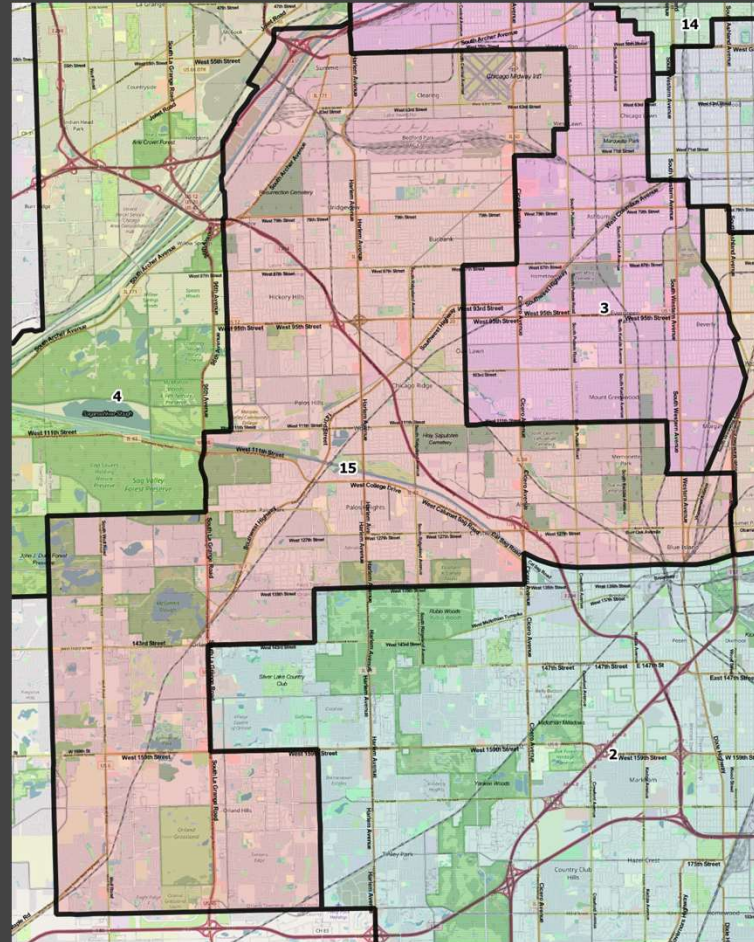
13th Subcircuit



14th Subcircuit



15th Subcircuit



LETTERS IN SUPPORT

Hispanic Lawyers Association of Illinois



Andrea Belard
President

Janneth Lanini
**Immediate Past
President**

Dora Cornelio
**Communications
Secretary**

Cindy Medina-
Cervantes
Membership Secretary

Jocely Pacheco
Recording Secretary

Vivian Sandoval
Treasurer

Yeny Ciborowski
Jessica Gonzalez
Thomas Guzman
Martin Montes
Juan Morado, Jr.
Hon. David Navarro
Martin Quintana
Tanya Velazquez
Board Members

HLAI CHARITIES

Cesar Orozco
President

Armando M. Gamboa
Vice-President

Perla Gonzalez
Secretary/Treasurer

Steve Flores
Jorge M. Leon
Leynee C. Flores
Juan Morado, Jr.
Janneth Lanini
Carla Espinoza
Board Members

October 19, 2021

Illinois General Assembly
Statehouse
Springfield IL 62706

Re: Cook County Judicial Subcircuits

To the Members of the 102nd Illinois General Assembly,

HLAI, serving the Hispanic Lawyers of Illinois, writes to express support for the remapping of the Cook County judicial subcircuits consistent with the recently completed 2020 United States Census. The 2020 Census reflects that the Latino population grew during the last decade and now comprises more than 18.2% of Illinois' population. More than 30% of the City of Chicago's population is Latino, and Latinos account for more than 26.5% of Cook County's population.

Latinos are significantly underrepresented on the bench in Cook County despite the growing and sizable population of Latinos revealed by the recently completed 2020 United States Census. The current Cook County judicial subcircuits map is based on data from the 1990 Census. This map is inconsistent with the Illinois Legislature's goal to create subcircuits in which diverse groups of judges can be elected from their communities. We have a responsibility today to create maps that fairly and sufficiently afford Latinos the opportunity to successfully compete in elected contests for the judiciary. This body is obligated to draw subcircuits that better reflect today's population.

There are at least two Cook County subcircuits we can strengthen to enable qualified Latinos and members of our association to run for and serve on the bench. HLAI supports redrawing the Cook County 6th subcircuit map to encompass the predominantly Latino neighborhoods of Belmont Central, Belmont Cragin, Montclare, Hermosa, Logan Square, Kilbourn Park, Avondale, Humboldt Park, and parts of Irving Park and Albany Park. HLAI supports redrawing Cook County 14th subcircuit to encompass the predominantly Latino neighborhoods of Back of the Yards, Pilsen, McKinley Park, Marshall Square, Heart of Chicago, Little Village, Archer Heights, Brighton Park, parts of Gage Park and Bridgeport, and portions of the Town of Cicero.

HLAI urges the Redistricting subcommittee to incorporate the above-mentioned facts and data as the subcommittee redraws the boundaries of the Cook County judicial subcircuits.

Thank you for your time and consideration.

Sincerely,

Andrea Belard
President

LETTERS IN SUPPORT

Puerto Rican Bar Association of Illinois



THE PUERTO RICAN BAR ASSOCIATION OF
ILLINOIS

To the members of the Illinois General Assembly

On behalf of the Puerto Rican Bar Association, please be advised that we support the redistricting of the judicial sub-circuits pursuant to the data provided to us by the United States 2020 census.

There have been dramatic demographic changes in the last 30 years since the sub-circuits were first created pursuant to the 1990 census.

Our members urge the redistricting committee of the General Assembly to take this matter seriously and to redraw the sub-circuits pursuant to the most recent racial and ethnic demographics data that were made available to us.

Sincerely,
The Puerto Rican Bar Association of Illinois.
2332 N. Milwaukee Avenue
Chicago, Illinois 60647
www.prbalawil.com

LETTERS IN SUPPORT

Puerto Rican Police Association

1 of 1



Puerto Rican Police Association
President Waldemar Cruz
4321 W. Armitage Ave, Suite 101
Chicago, IL 60639
773-888-7176
prpachicago@gmail.com

To whom it may concern,

On behalf of Puerto Rican Police Association, please be advised that we support the redistricting of the judicial sub circuits pursuant to the data provided to us by the 2020 census. We support the map which was presented at one of the public hearings chaired by State Senator Omar Aquino. That map was drawn by Frank Calabrese who had the complete support and cooperation of members of our Hispanic legal community.

Retired State Senator and Current Clerk of the Circuit Court, Iris Martinez, spoke in support of redistricting the sub-circuits at one of State Senator Omar Aquino's hearings. In fact, then State Senator Iris Martinez was one of the sponsors of the judicial sub-circuit redistricting efforts in Springfield.

Further, the map is supported by Judge Gloria Chevere, Ret. who testified on behalf of the redistricting of the sub-circuits since the current sub-circuits were drawn pursuant to the 1990 census. Judge Chevere made a point to highlight the fact that the old predominately Hispanic communities such as Bucktown, Wicker Park, Logan Square and Roscoe Village are still in the current sixth sub-circuit even though the predominantly Puerto Rican population that lived there has moved west and north of those communities.

Our association urges the Redistricting Committee of the General Assembly to take this matter seriously and adopt the sub-circuit map that has been proposed and supported by members of the Hispanic legal community.

Sincerely,
Puerto Rican Police Association